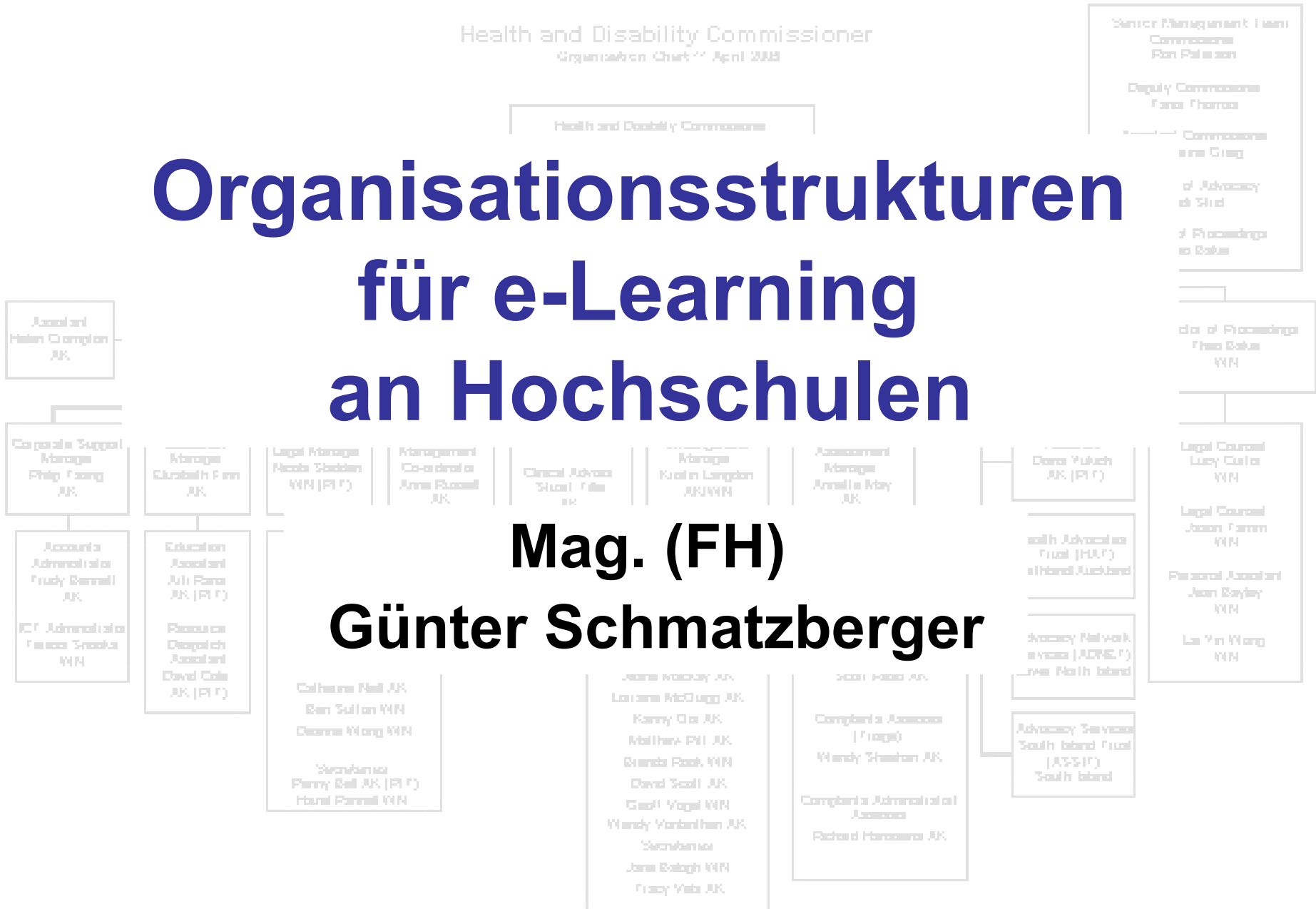


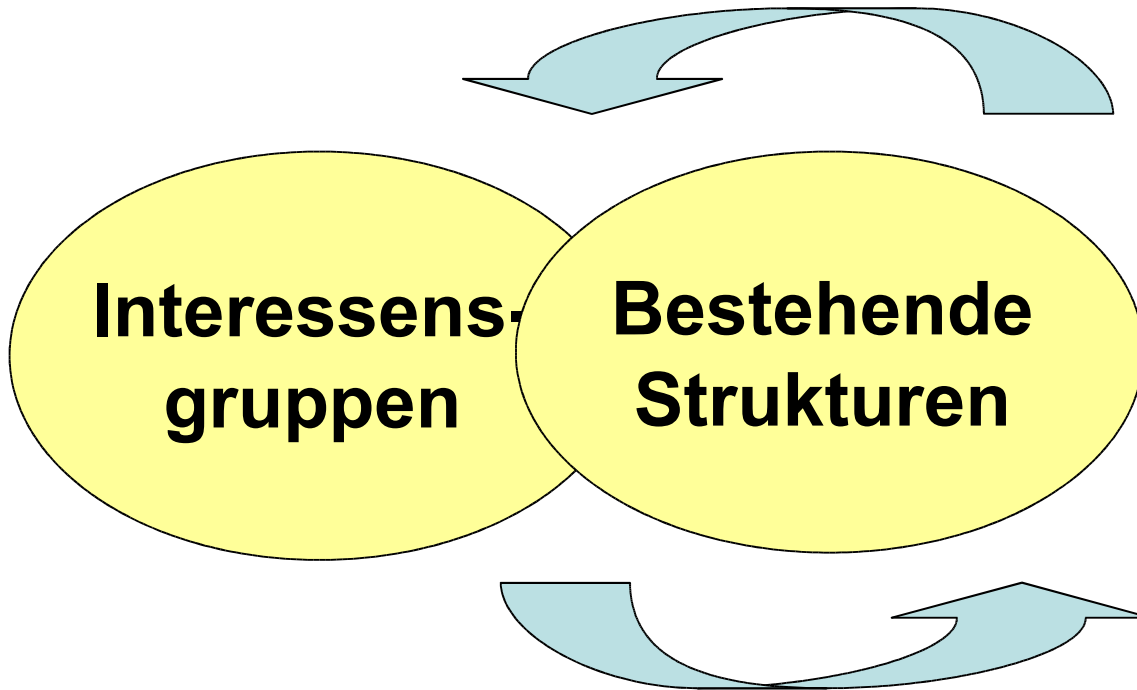
Health and Disability Commissioner

Organisationsstrukturen für e-Learning an Hochschulen

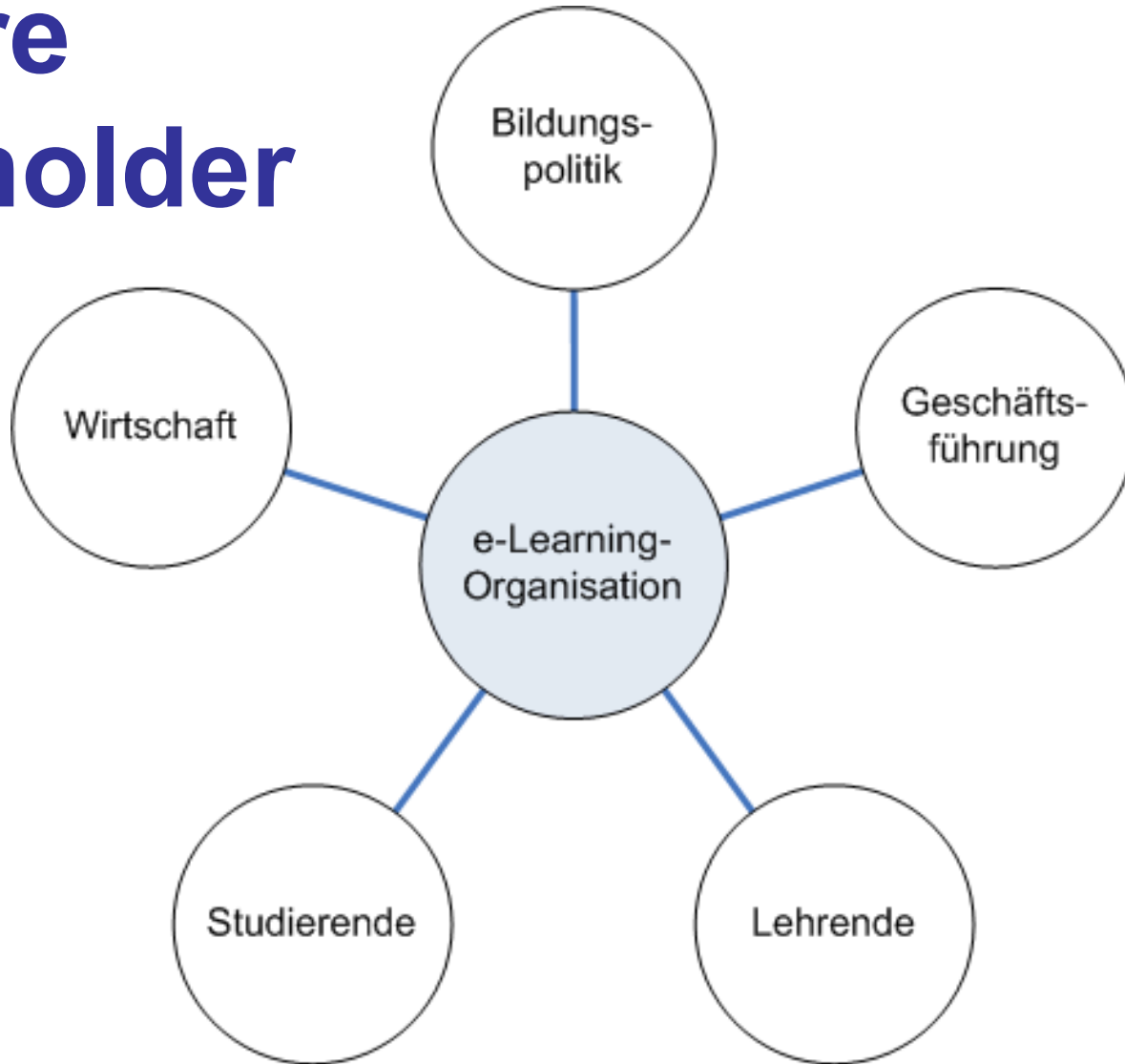
**Mag. (FH)
Günter Schmatzberger**



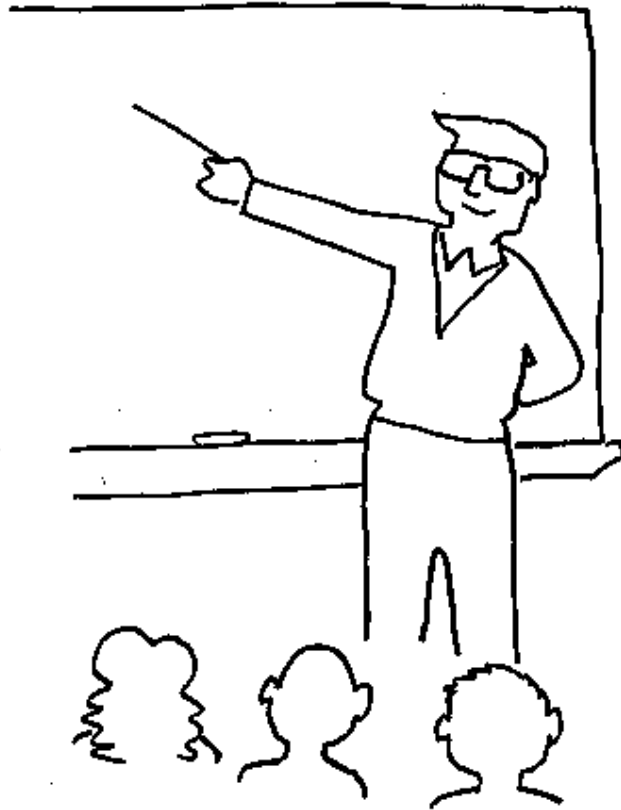
Wie entstehen Org.-Strukturen?



Primäre Stakeholder



Lehrbeauftragte



- Zeit
- Support
- Sozialer Kontakt
- Motivation, Anreiz
- Floriani-Prinzip

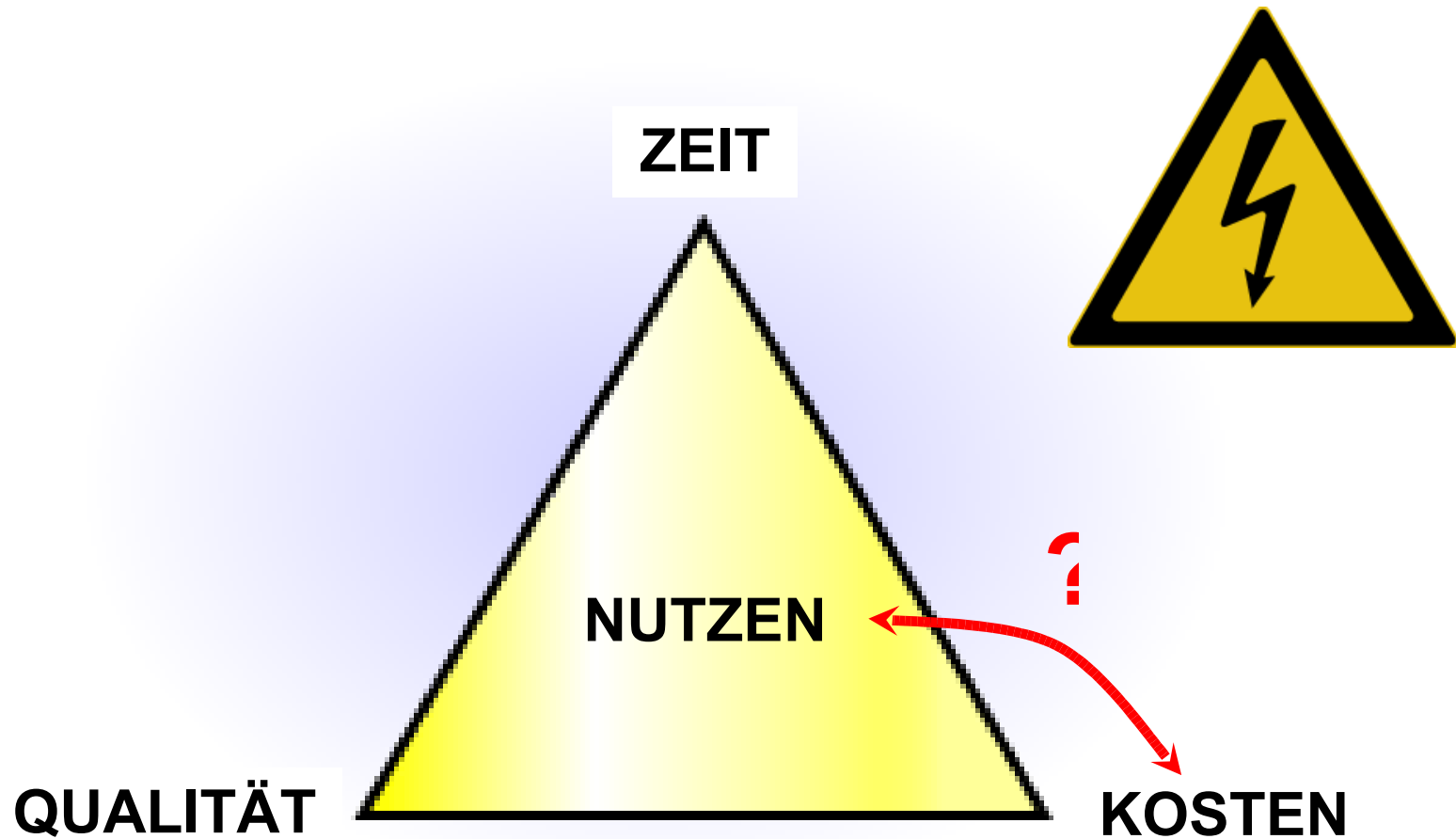
Studierende



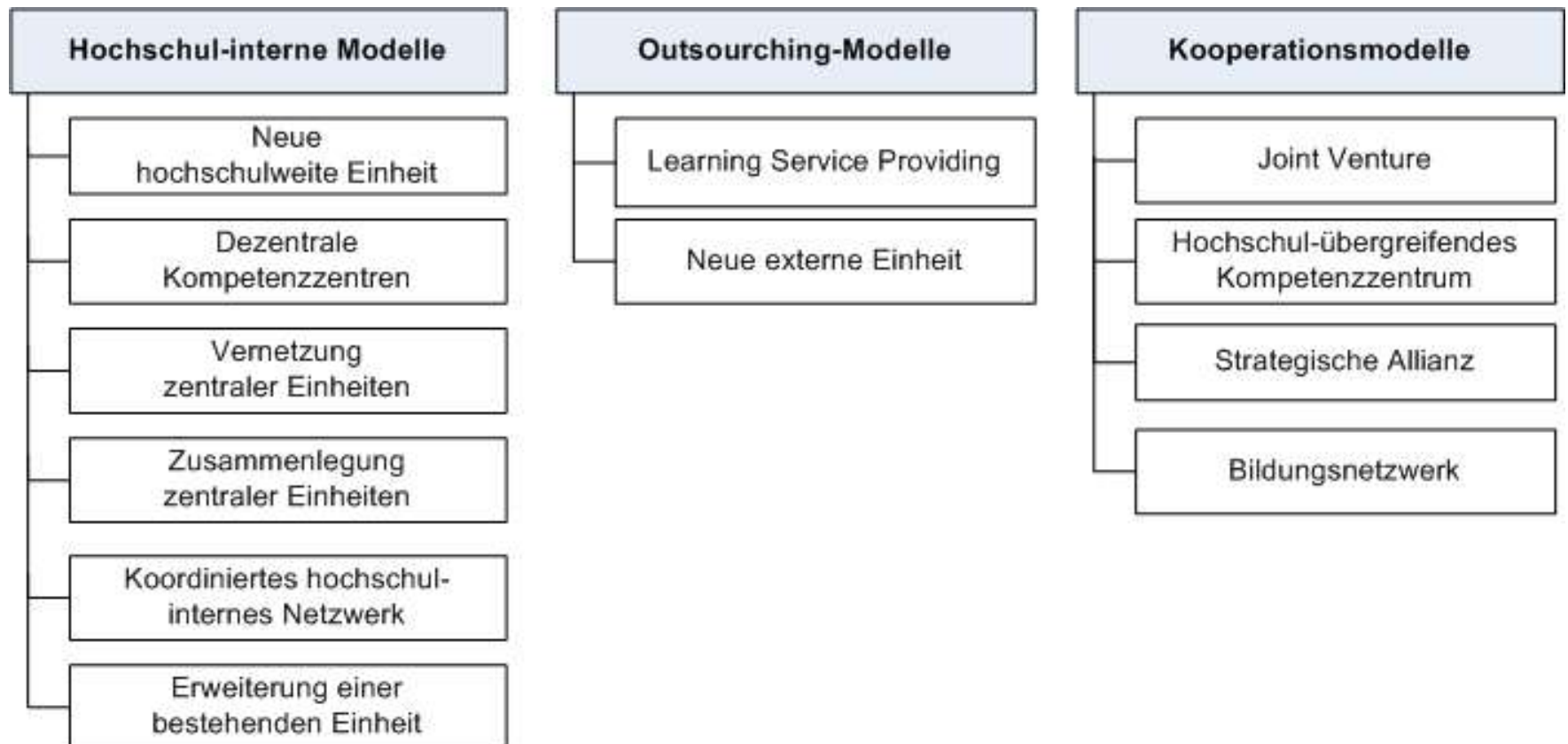
- Flexibilisierung
- Sozialer Kontakt
- Support



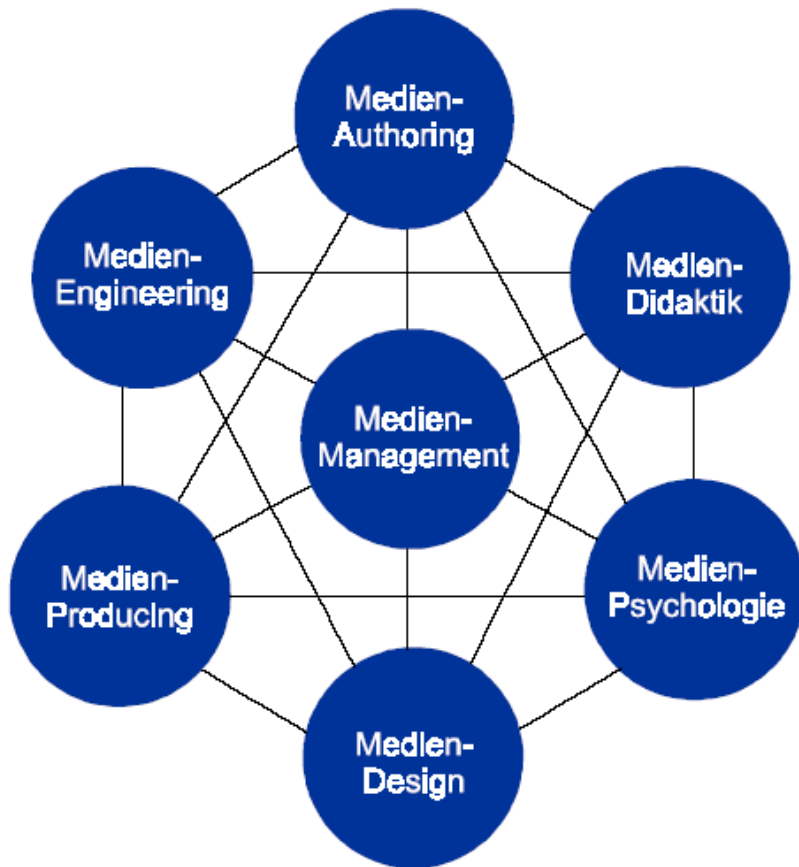
Hochschulleitung



Organisationsmodelle



E-Learning Management



- Strategie
- Projektunterstützung
- Controlling und Evaluierung
- Kooperationsmanagement
- Internes Marketing
- Weiterbildung
- Rechte